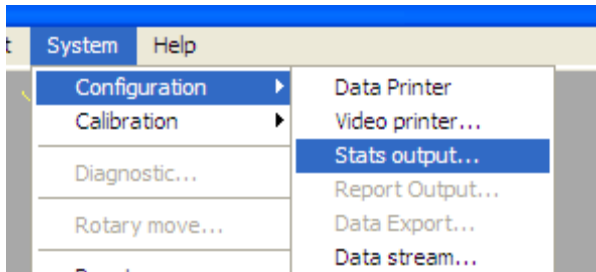
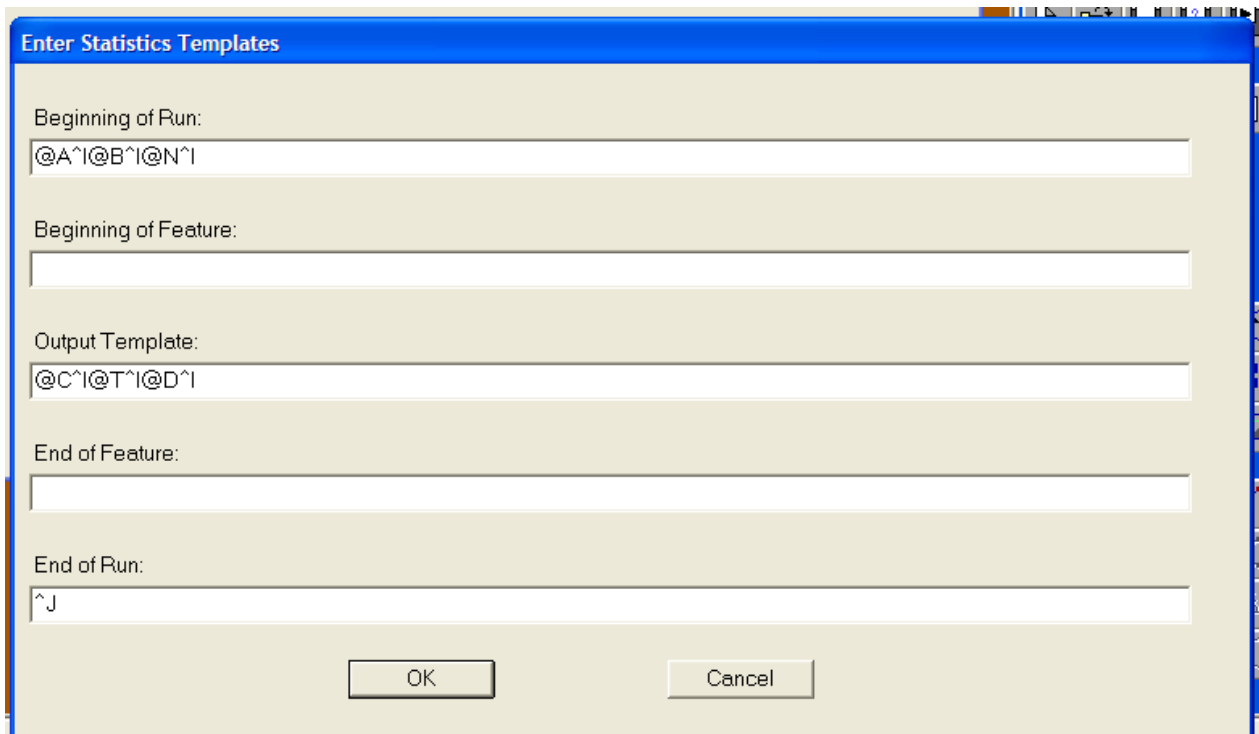


GETTING STATISTICS DATA INTO EXCEL – MeasureMind v10

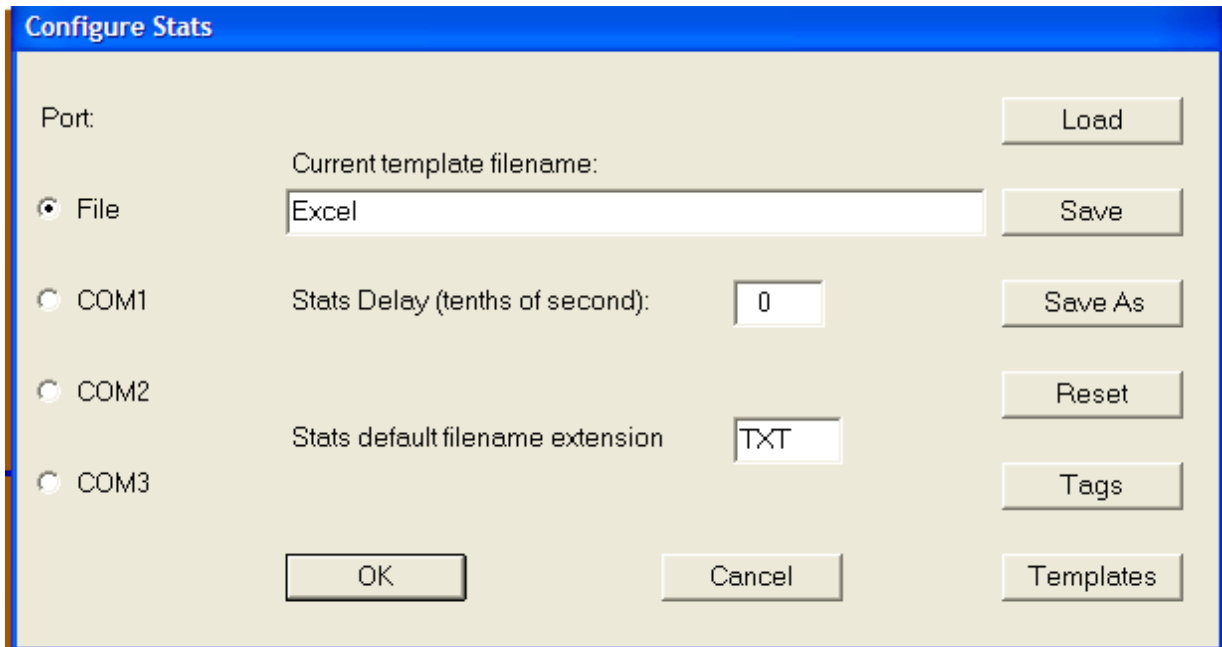
1. In MeasureMind, open the .RTN file you want to run, or create a new one.
2. Click System -> Configuration -> Stats output...



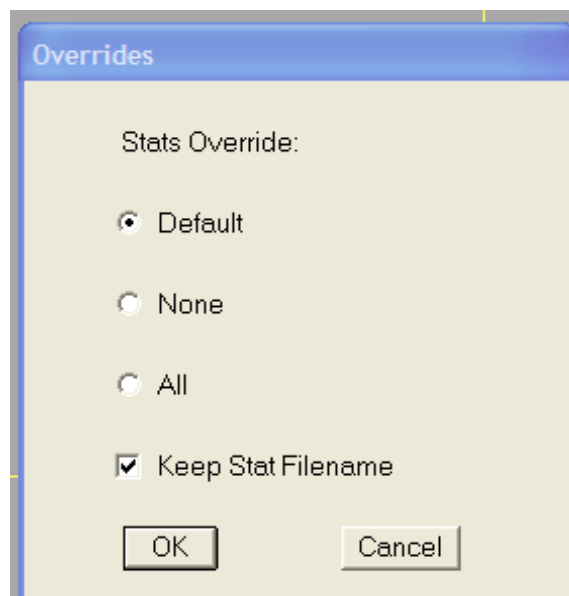
3. Click "Templates"
4. In the Statistics tab, make the template look like the following:

A screenshot of the 'Enter Statistics Templates' dialog box. The dialog has a blue title bar and a light beige background. It contains five text input fields with labels: 'Beginning of Run:' (containing '@A^I@B^I@N^I'), 'Beginning of Feature:' (empty), 'Output Template:' (containing '@C^I@T^I@D^I'), 'End of Feature:' (empty), and 'End of Run:' (containing '^J'). At the bottom, there are 'OK' and 'Cancel' buttons.

5. Enter "TXT" for the extension. Click on Save As... For File name: type "EXCEL" and click Save.

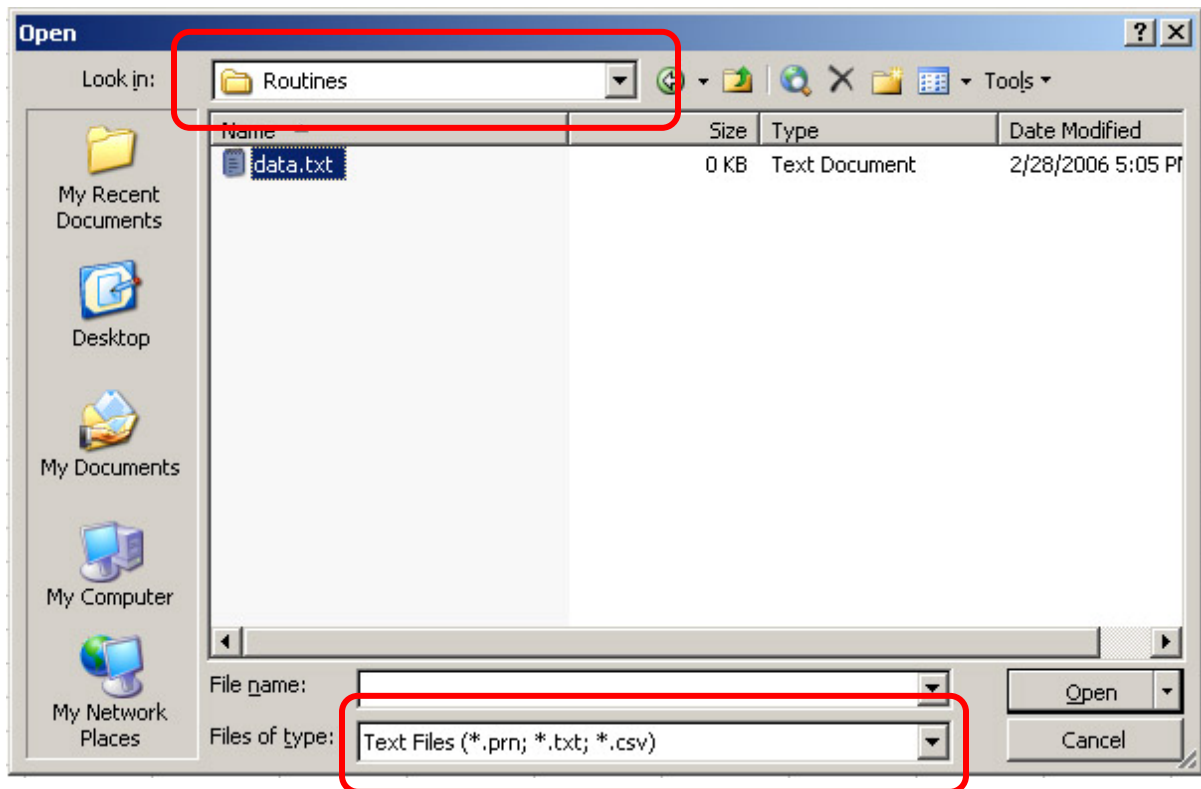


6. Click on File -> Run -> Overrides -> Stats
7. Check "Keep Stats Filename"

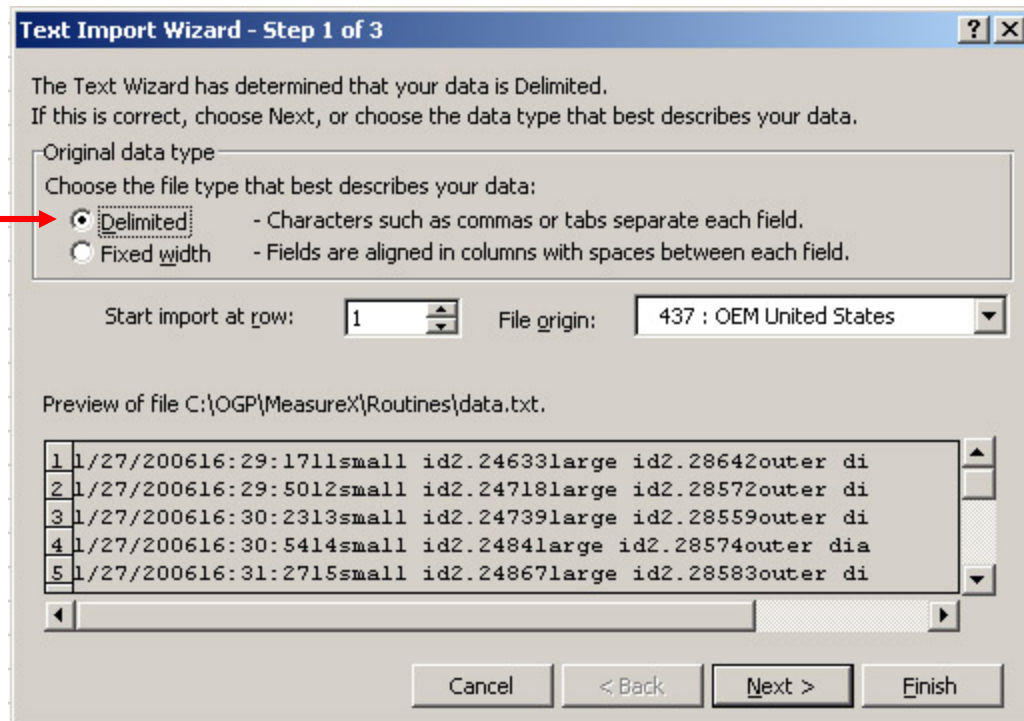


8. Enter a file name (Example: Data.txt) and make a note of the file name that is displayed.
9. Save the routine.

10. Run the routine.
11. Open Excel.
12. Select File -> Open



13. By "Files of type:" make sure you select "Text Files (*.prn; *.txt; *.csv)"
14. By "Look in:" make sure this is the directory that was displayed in the Run Overrides screen (see step 10 above). You may have to Click "My Computer" on the left and navigate to the right directory
15. Select the file and click Open. The Text import wizard opens.



16. Choose "Delimited"

17. Click Finish

This should do it!

For other programs,

Follow all steps except Steps 3-5. Instead, click on "Load..." and select "Excel.cfg" then "OK". Then save the routine.

Everything else is the same.

GOOD LUCK!!!!!!!!!!